

Nestler-matho®

DESIGN · BRANDS · INSPIRATION



FOCUS

COLLECTION 2025



TABLE OF CONTENTS

WE DELIVER AND
FINISH ALREADY
FROM 1 PIECE!

BOTTLES AND TUMBLERS

vacuum bottles
tumblers
vacuum jugs
double-walled tumbler
coffee-to-go cup
rPET bottle
construction site can

5-11

DRINKING STRAW

glass drinking straws

12-14

char- gers + cables

travel adapter
WiFi smart socket
socket cube
charger
charging cable
in-car smartphone holder

22-28

POWER BANKS

power banks

29-32

Wellness

neck massager

42

mu sic

speaker
mini speaker
stereo loudspeaker set
wireless speaker
headphones
earbuds
charging, light, sound!

43-48

ARC lighters

arc lighters

55

SALE

sale

56-57



Lifestyle & leisure

BBQ
BBQ thermometer
chopping boards
bamboo chopping board
waiter's knife
pepper/salt mill
universal knife

15-18

OFFICE

desk calculator
speaker set
fans

20-21

LIGHT

table lamps
reading lights
torches
working light
sensor-switched head torch

33-40

climate and time

Radio-controlled wall clock
hygrothermometer

41

TOOLS

screwdriver set
24-piece precision tool set

49

lunch boxes

cereal cup
stainless steel container
stainless steel lunch box
lunch boxes

50-54

DIRECT IMPORT

The whole world
of possibilities

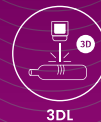
19

finishing options
58-59

legend
59

pricelist for personalisation
U6

index
U5



BOTTLES A N D TUMBLERS



NEW

FOCUS vacuum bottle 685 ml

N-m 100. FOCUS puts your advertising message in the spotlight. Hand-polished stainless steel drinking bottle with a carrying strap in an elegant gift box. Material: V4A inside, V2A outside, PP, acrylic. Weight: 371 g. Dimensions: Ø 101 x 178 mm. **Advertising option:** on the body, 70 x 50 mm (3DL2), 20 x 50 mm (L2), 25 x 50 mm (D3 with singeing)



NEW



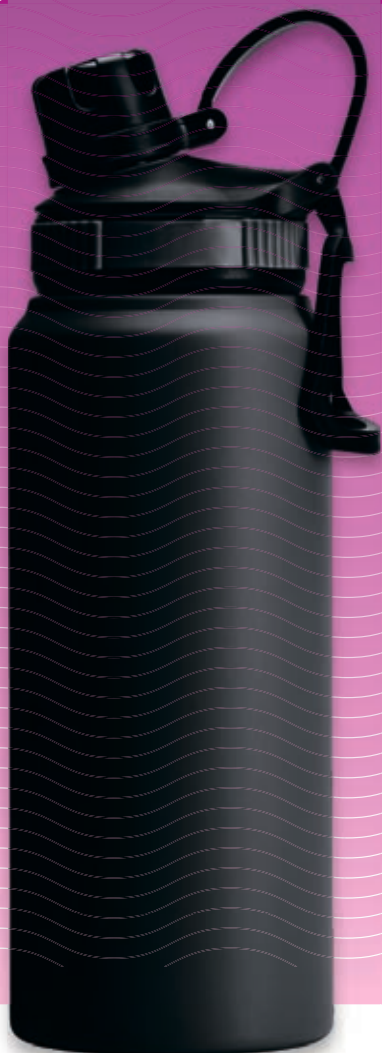
TRIO vacuum bottle 500ml

N-m 651 brushed / N-m 652 white / N-m 653 black. Timelessly beautiful and always up to date: double-walled 500 ml vacuum bottle. Material: stainless steel, PP, silicone. Weight: 293 g. Dimensions:

Ø 70 x 277 mm. **Advertising options:** on body, 20 x 40 mm (L2), 50 x 70 mm (3DL3), 25 x 40 mm (D2, UV2), 220 mm circumference x 110 mm height (UVR), on lid, Ø 15 mm (D3, L3)



NEW



FLIP vacuum bottle 750 ml

N-m 670. Drinking is important! It's good to have enough with you. 750 ml vacuum bottle with large drinking opening and carrying handle. Material: stainless steel, powder-coated. Weight: 358 g. Dimensions: Ø 82.5 x 260 mm. **Advertising options:** on the body, 20 x 50 mm (D2, L3), 60 x 50 mm, (3DL3)



AQUA sports bottle

N-m 588. Drinking enough is essential for life! 900 ml sports bottle with flip-top cap, fruit sieve, handle and mouthpiece. Material: Tritan, PP. Weight: 150 g. Dimensions: Ø 79 x 256 mm. **Advertising options:** on the flip-top cap, 25 x 10 mm (D3), on the bottle, 20 x 50 mm (D2)





POP vacuum flask

N-m 590 black / N-m 591 white. The most elegant cover for your favourite tea! Contents: 750 ml. Material: stainless steel, PP. Weight: 344 g. Dimensions: Ø 72 x 270. **Advertising options:** on the body, 25 x 40 mm (D2), 20 x 40 mm (L2, UV2), 55 x 55 mm (3DL4), all-round print on request (UVR)



GRIP vacuum flask

N-m 581 black / N-m 582 white: handy 550 ml vacuum bottle with textured powder coating. Material: stainless steel. Weight: 284 g. Dimensions: Ø 74 x 224 mm. **Advertising options:** 3D engraving on body, 50 x 70 mm (3DL4), on body upright, 20 x 40 mm (D2, L3), on lid, 20 x 20 mm (L3, D3)





THEO 1 litre vacuum jug

N-m 639. Elegant 1000 ml isothermal glass jug. With screw-on lid and push-button for convenient pouring. Materials: ABS, glass, aluminium. Weight: 837 g. Dimensions: Ø 122 x 245 mm. **Advertising imprint:** on body, 30 x 50 mm (D2), 30 x 70 mm (D3)



RICKY double-walled tumbler

N-m 647. Double-walled 550 ml drinking cup for hot or cold drinks. Lid with sliding opening, also for drinking straws. Material: stainless steel, PP, PC. Weight: 203 g. Dimensions: Ø 80 x 176 mm. **Advertising options:** on the body, 50 x 50 mm (3DL4), 20 x 40 mm upright (D2, L3)





EASY coffee-to-go cup

N-m 646B black / N-m 646W white. Double-walled 300 ml cup with screw-on lid and drinking opening. Material: PP, silicone. Weight: 4 g. Dimensions: Ø 93 x 125 mm. **Advertising options:** on the body, 25 x 30 mm (D2)



CLEAR 700 ml rPET bottle

N-m 616. 700 ml bottle with stainless steel screw cap. Material: rPET, PP, stainless steel. Weight: 88 g. Dimensions: Ø 72 x 210 mm. **Advertising options:** on the body, 25 x 50 mm (D2), on the lid, Ø 30 mm (L2), on the side of the lid, 30 x 12 mm (3DL2), UV round print (UVR)



PUSH thermos cup with push-fit lid

N-m 556. An elegant and functional 300 ml thermo mug with a press-and-squeeze stopper. Material: stainless steel, ABS. Weight: 237 g. Dimensions: Ø 68 x 165 mm. **Advertising options:** On the body, 17 x 70 mm (L2), 3D engraving, 50 x 70 mm (3DL3), 30 x 70 mm (D2), full surface (UVR)



Bottle with silicone sleeve

N-m 558. An eye-catcher, before and after unpacking. 500 ml glass bottle with black silicone sleeve. Material: borosilicate glass, silicone, bamboo. Weight: 346 g. Dimensions: Ø 69 x 218 mm.

Advertising option: On the silicone sleeve, 20 x 40 mm (L3H)



Coffee mug

N-m 522 black / N-m 523 white: handy 350 ml vacuum mug for hot and cold drinks, with one-handed click closure and durable powder coating. Material: stainless steel, plastic. Weight: 220 g. Dimensions: Ø 74 x 143 mm. **Advertising options:** On the lid 20 x 10 mm (D2), upright on the body of the bottle 60 x 30 mm (D2), upright on the body of the bottle 60 x 12 mm (L2), 3D engraving, 55 x 60 mm max. (3DL4), UV direct round printing 360° (UVR)



BOB 1,200 ml construction site can

N-m 612. Vacuum bottle with 1200 ml capacity, screw-on lid that can be used as a drinking cup and folding handle. Material: stainless steel, ABS. Weight: 816 g. Dimensions: Ø 100 x 313 mm.

Advertising options: on body 20 x 50 mm (D2,L2), 60 x 70 mm (3DL3), on lid Ø 50mm (D2,L2)



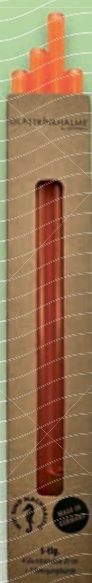
DRINKING STRAWS



2er Set



4er Set



6er Set

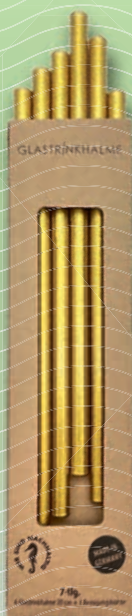


Illustration shows colored straws

Sets of 2, 4 and 6

Recyclable glass drinking straws, dishwasher-safe, food-safe and tasteless. Standard size 200 x Ø 8 mm, in crystal clear or 31 colors from stock. Natural brown packaging with window punching. **Advertising** on the straws by **laser engraving**, 5 x 40 mm (L6-2 for set of 2, L6-4 for set of 4, L6 for set of 6) or **food-safe screen printing**, up to 25 x 70 mm (D6-2 for set of 2, D6-4 for set of 4, D6 for set of 6).



26 ATTRACTIVE STANDARD COLORS

Transparent or matte, translucent or opaque, with a metallic effect or multicolored.

Green	38 TH-W
Yellow	2 TH-W
Amber	4 TH-W
Red	22 TH-W
Magenta	25 TH-W
Violet	20 TH-W
Cobalt blue	12 TH-W
Blue	21 TH-W
Blue green	3 TH-W
Light blue	53 TH-W
Lavender	11 TH-W
Pink	1 TH-W
Satin	7 TH-W

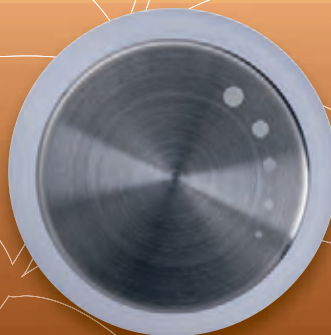
Grey	19 TH-W
Black transparent	18 TH-W
Black	23 TH-W
Gold	9 TH-W
Silver	8 TH-W
Copper	13 TH-W
Mother of pearl	24 TH-W
Neon pink	17 TH-W
Neon yellow	14 TH-W
Neon green	16 TH-W
Neon orange	15 TH-W
Matte white	59 TH-W
Black matt	64 TH-W

The right straw for every customer

Choose from our standard colors available from stock or let us produce your 100% matching custom color, which can be implemented from as little as 10,000 straws. Sounds like an incredible amount? But in fact, that's only 200 gastro boxes or 1666 sets of 6!

Lifestyle & leisure

NEW



MILLY pepper/salt mill

N-m 663 white / N-m 664 black. The ceramic grinder of this simple salt or pepper mill can be adjusted with a slight turn. Material: ABS, stainless steel, ceramic. Weight: 167 g. Dimensions: Ø 58 x 165 mm.

Advertising option: On the body, 15 x 50 mm (D2)

NEW



CHOP I chopping board

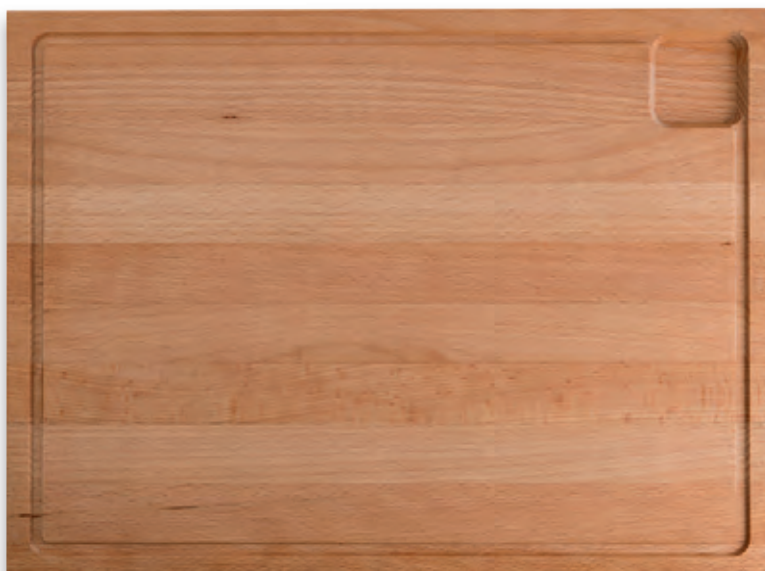
N-m 658. Beechwood chopping board, made in Europe, with oiled juice groove. Weight: approx. 630 g. Dimensions: 300 x 200 x 15 mm.

Advertising option: on the outer edge of the top side, 50 x 8 mm (L2)

NEW

CHOP II chopping board

N-m 659. Beechwood chopping board, made in Europe, with oiled juice groove and juice tray. Weight: approx. 1700 g. Dimensions: 395 x 295 x 20 mm. **Advertising option:** on the outer edge of the top side, 50 x 8 mm (L2)



NEW

CHEF universal knife

N-m 662. Perfectly balanced, forged universal chef's knife with a 20 cm blade, not dishwasher-safe. Material: rustproof stainless steel, Pakka wood handle. Weight: 250 g. Dimensions: 335 x 45 x 27 mm.

Advertising option: on the blade, 15 x 25 mm (L2)





GRID bread cutting board

N-m 660. Beechwood bread-slicing board, made in Europe, with removable grid, oiled. Rubber feet to prevent slipping. Weight: approx. 1050 g. Dimensions: 400 x 250 x 22 mm. **Advertising option:** on the outer edge of the top side, 50 x 20 mm (L2)

NEW



SLICE bread knife

N-m 661. Classic forged bread knife with 20 cm blade with fine serration, not dishwasher-safe. Material: rustproof stainless steel, Pakka wood handle. Weight: 180 g. Dimensions: 325 x 28 x 20 mm. **Advertising option:** on blade, 15 x 15 mm (L2)



CUT bamboo chopping board with knives

N-m 593. It works! A handy cutting board with two knives for when you're on the go. Material: bamboo, stainless steel. Weight: 521 g. Dimensions: 289 x 92 x 31 mm (closed), 289 x 184 x 15.5 mm (open). **Advertising options:** on body, up to 50 x 30 mm (L4), up to 90 x 50 mm (L5), on handle, 20 x 10 mm (L3), on blade, 20 x 10 mm (L3)



SOLID BBQ

N-m 605. Ultra-fast, ultra-stylish grilling! The best charcoal grill to go. Material: stainless steel, rolled steel, chrome-plated steel. Weight: 3454 g. Dimensions: 362 x 256 x 45 mm (closed), 350 x 240 x 390 mm (open). Grilling surface 230 x 345 mm. Advertising: on the body, 50 x 30 mm (D2), 70 x 40 mm (D3)



HOT BBQ thermometer

N-m 594. BBQ thermometer with wireless transmission and extensive menu in the free 'ToGrill' app. Material: stainless steel, ABS. Weight: 28 g. Dimensions: 777 mm (cable length), 34 x 34 x 12 mm (transmitter unit). **Advertising option:** on the body, 15 x 15 mm (D2)



GRAND CRU waiter's knife

N-m 595. With comfortable double lever, bottle opener and cutter. Material: stainless steel, pakka wood, steel. Weight: 102 g. Dimensions: 118 x 30 x 9 mm (closed). **Advertising option:** on the body, 15 x 5 mm (L2)





TIMELESS desk calculator

N-m 638. Classic desk calculator with all the essential functions. Comes with a AAA battery. Material: ABS. Weight: 117 g. Dimensions: 157 x 105 x 25 mm. **Branding:** under the display, 50 x 4 mm (D2)

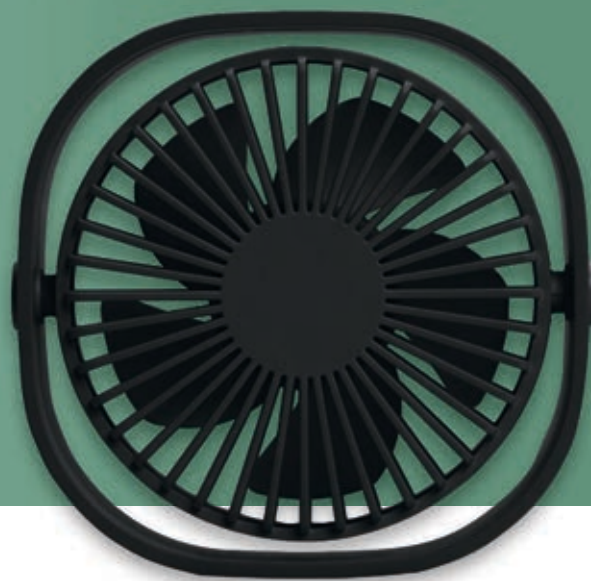
LOOK PC speaker set

N-m 598. Set of one bass speaker and two satellite speakers (5W + 2 x 3W, passive). Material: rABS. Weight: 470 g. Dimensions: 130 x 100 x 110 mm (bass), 80 x 55 x 70 mm (satellite). **Advertising options:** top of bass, 50 x 30 mm, top of satellite, 10 x 20 mm (D3)



BREEZY handheld fan

N-m 650. Refreshment at the push of a button! Handy fan with 1200mAh battery, three blower levels and wrist strap. Material: ABS, PP. Weight: 88 g. Dimensions: 63.3 x 135.7 x 33.7 mm. **Advertising options:** on the front under the switch, 35 x 6 mm (D2, L2), on the front centred in front of the fan Ø 14 mm (D2)



BREEZE table fan

N-m 637 white / N-m 649 black. Cool table fan with three wind speeds, can be tilted, USB-A connection. Material: ABS. Weight 173 g. Dimensions: 125 x 125 x 50 mm. **Advertising option:** on the front, Ø 30 mm (D2), on the frame, 40 x 24 mm (D2)





TRAVELER travel adapter

N-m 627. Universal travel adapter for most sockets in the world with overload protection and charging options for mobile devices (2 x USB-C, 2 x USB-A). Material: ABS. Weight: 147 g. Dimensions: 76 x 57 x 54 mm. **Advertising option:** on the top side, 25 x 25 mm (D2, UV2), on the long side, 25 x 25 mm (D2, UV2), on the front side, 25 x 25 mm (D2, UV2)



WiFi smart socket

N-m 485-2. Smart socket for remote control of your lights and appliances at home. With energy consumption display in the SMART LIFE app. Supports Amazon Alexa and Google Home. Material: ABS. Weight: 86 g. Dimensions: 52.5 x 52.5 x 82 mm. **Advertising option:** on the body 30 x 30 mm (D2, UV2)

chargers + cables



PLUG socket cube

N-m 669. The classic power strip as a cube and with charging sockets for your mobile devices with up to 35W (PD). Length of connection cable: 1.5 m. Material: ABS, weight: 466 g. Dimensions: 87 x 87 x 77 mm. Advertising option: on the top side, 50 x 25 mm (D2, UV2), on the sides above the sockets, 45 x 10 mm (D2, UV2)



3-in-1 cable black

N-m 433. A cable for your 'old' devices, too. 100 cm 3-in-1 charging cable with Lightning, USB C and micro USB output. Without quick-charging function. Data transfer only via Lightning/micro USB. Material: aluminium, nylon. Weight: 38 g. **Advertising option:** on the middle section, 25 x 8 mm (D2, L2)



METER charging cable 100W

N-m 642. How many watts does my device actually charge at? Now you can see it at a glance. Charging cable with 100W capacity, data transfer up to 480mbps and digital display. Material: aluminium, nylon. Weight: 31 g. Dimensions: length 100 cm. **Advertising option:** on the plug, 15 x 7 mm (D2, L2)



MAG in-car smartphone holder

N-m 602. Exceptional MagSafe smartphone holder for cars with an exceptionally stable clamp. Material: ABS, stainless steel. Weight: 70 g. Dimensions: Ø 62 x 80 mm. **Advertising option:** On the magnetic plate, up to Ø 30 mm, 1c white or silver (D2)



PULL 30 W car charger

N-m 551. High-performance USB-A 12V charger with 30W output, disappears flush into the socket. Material: aluminium. Weight: 21 g. Dimensions: Ø 21 x 39 mm. **Advertising options:** On the shaft, 7 x 20 mm (L2), 8 x 20 mm (D2), 3D engraving, max. 16 mm width (3DL3)



①



①

① DRUM 2-in-2 cable box 65W

N-m 625 white / N-m 672 black. Cable box with all important connections (USB-A, USB-C, Lightning). Charging with up to 65W, data transfer 480 mbps, wrist strap. Material: ABS, aluminium, weight: 53 g. Dimensions: Ø 58 x 27 mm. **Advertising option:** on the body, 30 x 30 mm (D2, L2, UV2)



②



② ROLL UP cable box

N-m 578. Practical cable box with 94 cm cable and magnetic pins (Lightning, USB-C, Micro-USB) that can remain in the mobile device. Charging and data transfer function. Material: ABS. Weight: 42 g. Dimensions: 63 x 55 x 27 mm. **Advertising options:** on the body, 20 x 8 mm (D2, 1c white or silver), on the USB-A plug, 8 x 10 mm (D2, L2)





POWER CUBE 20 GaN wall charger

N-m 631. The power cube with GaN technology: charging with up to 20W. Material: ABS. Weight: 44 g. Dimensions: 70 x 31.5 x 34.5 mm. **Advertising option:** on the body, 18 x 18 mm (D2, UV2)

Wallcharger PD 20 W QC3.0

N-m 568-1. Wall charger with 20W PD (USB-C) and QC3.0 quick charge protocol. Material: ABS. Weight: 56 g. Dimensions: 82 x 47 x 28 mm. **Advertising option:** on the small side, 35 x 10 mm (D2), on the large side, 35 x 20 mm (D2, UV2)



TALENT wireless charger 3-in-1

N-m 630. No bigger than a biscuit, but full of hidden talents: 15W MagSafe, charging surfaces for smartphone, smartwatch and earphones. Material: ABS. Weight: 34 g. Dimensions: Ø 65 x 8.5 mm. **Advertising option:** centred on the top, Ø 25 mm (D2,UV2)





SPEED 65W GaN wall charger

N-m 614. Powerful 65W GaN power adapter with 65W PD (USB-C) and QC3.0 fast charging protocol (30W USB-A). Material: ABS. Weight: 110 g. Dimensions: 98 x 46 x 28 mm. **Branding:** on the body, 40 x 15 mm (D2, UV2)



POWER CUBE 65 GaN wall charger

N-m 632. Endless output at an economical price! Charge your devices quickly and reliably with up to 65W. With GaN technology, larger energy flows can be transported faster and safer. Material: ABS. Weight: 110 g. Dimensions: 89.7 x 31 x 53.3 mm. **Advertising option:** on the body, 35 x 25 mm (D2,UV2)



Wireless charger 15 W

N-m 484-1 black / N-m 544-1 white. Elegant 15W wireless charger with aluminium shell, charging indicator and large area for your advertising. Material: aluminium, ABS. Weight: 49 g. Dimensions: H 6.7 mm x Ø 99.2 mm. **Advertising options:** centred on the body up to 70 x 50 mm (L3), centred on the body up to 50 x 30 mm (L2, D2, UV2, GP2), full-surface up to Ø 95 mm (UV3, GP3)





AIR 2 wireless charger

N-m 577. Ultra-flat 15W wireless charger for all Qi-compatible devices. Material: ABS. Weight: 49 g. Dimensions: 126 x 65 x 7 mm.

Advertising option: on the body, 40 x 20 mm (D2, 1c white or silver, UV2, GP2)



SLIM 15W smartphone charging stand

N-m 601. Stylish, foldable 15W MagSafe charging stand for smartphones. Material: aluminium. Weight: 110 g. Dimensions 128 x 70 x 8.5 mm.

Advertising option: on the body, 40 x 10 mm (D2, L2, UV2)



POWER BANKS



TWENTY power bank 20000mAh

N-m 671. Now that's something you can hold on to! Powerful power bank with 22.5W PD charging power, integrated cables (USB-C and Lightning) and digital charge level display. Material: ABS, aluminium. Weight: 429 g. Dimensions: 142 x 61.5 x 22.7 mm. **Advertising options:** on the body, 30 x 50 mm (D2, L2, UV2), 40 x 70 mm (D3, L3, UV3)





TRUSTY power bank 5000 mAh

N-m 622 black / N-m 654 white. Economy powerbank with four-stage charge level indicator on the front. Material: ABS. Weight: 119 g. Dimensions: 95.5 x 63.5 x 14.5 mm. **Advertising option:** on the top of the body, 40 x 50 mm (D2, UV2, GP2), on the bottom of the body, 40 x 40 mm (D2, UV2, GP2)



EXTRA power bank 10000 mAh 15W wireless

N-m 628. 20W PD power bank with 15W inductive charging power, made from 100% recycled plastic. Material: rABS, rPET. Weight: 229 g, dimensions: 142 x 70 x 17 mm. **Advertising option:** on the side, up to 50 x 4 mm (D2, L2, UV2), on the textile side up to 40 x 40 mm 1-4C (TRI)





TRUST power bank 10000mAh

N-m 620 silver / N-m 621 black. Real 10000mAh capacity. Hand on it!
With torch function and digital display. Material: aluminium, ABS.
Weight: 250 g. Dimensions: 142 x 66.5 x 15.5 mm. **Advertising options:**
On the body, 50 x 40 mm (D2, L2, UV2, GP2), 70 x 50 mm (UV3, GP3)





ONE MagSafe power bank 500 mAh

N-m 629B black / N-m 629W white. 15W inductive charging, MagSafe, USB-C 20W PD output and kickstand. Material: ABS. Weight: 129 g. Dimensions: 92 x 63 x 18 mm. **Advertising options:** on the back, 40 x 40 mm (D2), on the front under the centring magnet, 40 x 8 mm (D2)



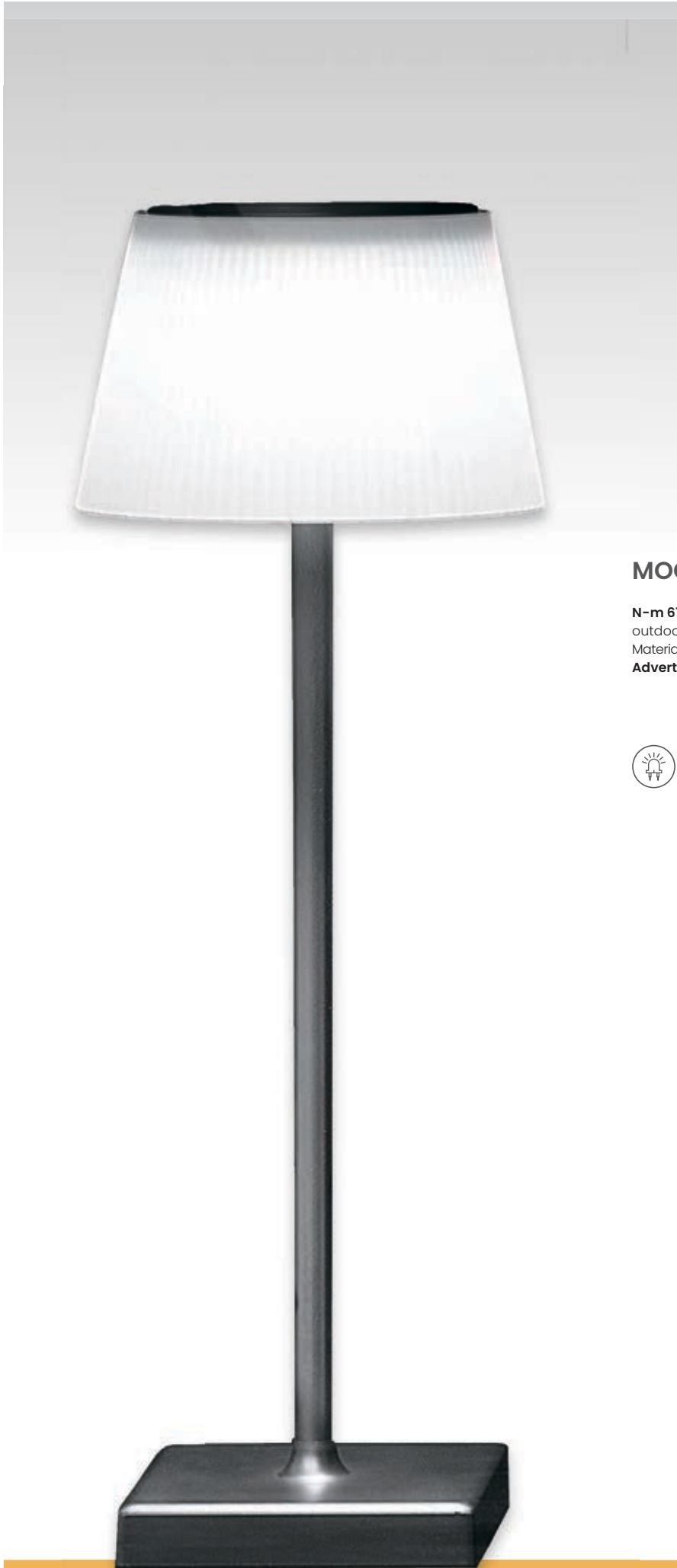
LIGHT



NICK reading light

N-m 665. A pleasant reading light with 3 light colours, dimming levels, perfectly adjustable: NICK is a true friend. Material: ABS, PC. Weight: 46 g. Dimensions: 121 x 35 x 18 mm. **Advertising option:** on the body, 30 x 20 mm (D2, UV2)



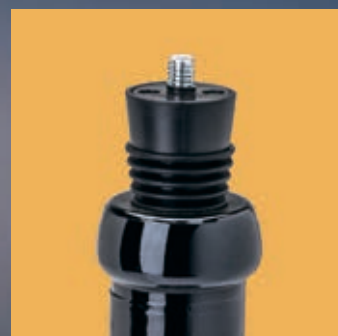


MOOD table lamp

N-m 610. Dimmable, IP44 splash-proof table lamp for indoor and outdoor use. Battery 1800mAh, 200 lumens, 4W, 3 light colours. Material: aluminium, ABS, PC. Weight: 520 g. Dimensions: Ø 130 x 380 mm.
Advertising option: on the base 50 x 10 mm (D2)



NEW



FARO table lamp

N-m 634 warm white / N-m 657 black. Dimmable table lamp with divisible mast, IP44 splash-proof for indoor and outdoor use, 200 lumens, 3W, 2600mAh battery for 30 hours of light and bottle neck adapter (only N-m 657). Material: aluminium, steel, PC. Weight: approx. 595 g. Dimensions: Ø 100 x 290 (or 380) mm. **Advertising options:** on the base 50 x 25 mm (D2, L2), on the shade, 20 x 50 mm upright (D2, L2)



NEW



AT WORK II working light

N-m 668. Robust work light with precise spotlight and bright COB light. Magnets on the rotatable clip and at the base of the light. Material: ABS, aluminium, PC. Weight: 68 g. Dimensions: 20 x 24 x 157 mm.

Advertising option: on the front under the COB light, 50 x 10 mm (D2, L2)

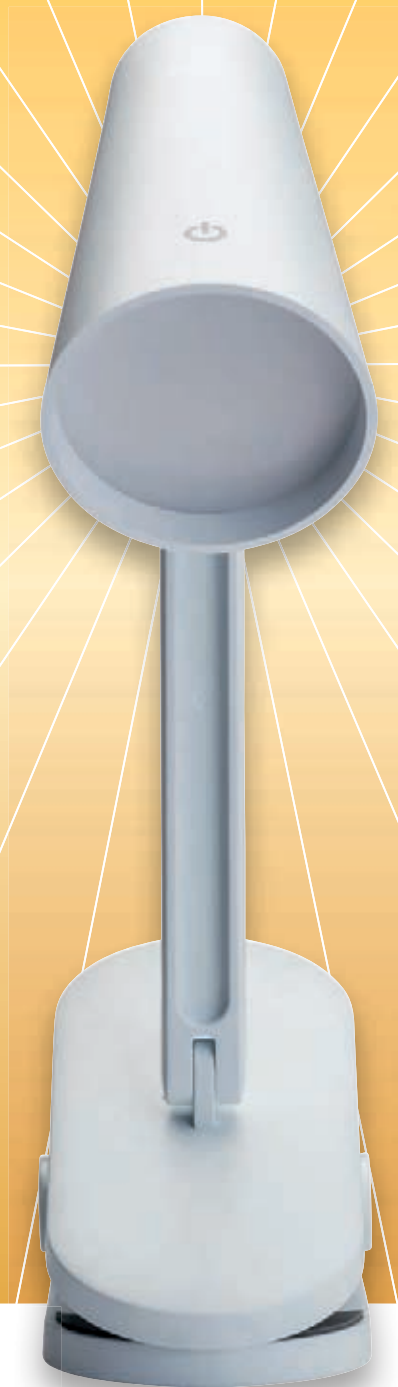


Rechargeable torch

N-m 554. It doesn't get much easier, more powerful or more economical than this: a handy 300-lumen torch with a 1200 mAh battery that can be charged directly via USB-A. Material: aluminium. Weight: 111 g. Dimensions: Ø 27 x 112 mm. **Advertising options:** on the recess, 20 x 8 mm (L2H, D2H), on the shaft 3D engraving, 25 x 17 mm (3DL3H), on the twist cap, Ø 20 mm (L2H)



NEW



SPOT clamp-on light

N-m 656. Practical lamp for a variety of uses. With clip or stand, 1200mAh battery, 12 SMD-LED light units, 3 light colours, dimmable. Material: ABS. Weight: 199 g. Dimensions: 90 x 60 x 232 mm. **Advertising options:** on the lamp head, 12 x 40 mm (D2), on the top of the clamp, 20 x 30 mm (D3)





MULTI work light

N-m 623. Handy torch with floodlight and spotlight, rotating magnetic clip and 400mAh battery. Material: aluminium, ABS, PC. Weight: 45 g. Dimensions: Ø 21 x 27 x 108 mm. **Advertising options:** on the body, 40 x 5 mm (D2, L2), 40 x 15 mm (3DL2), on the magnetic clip, 7 x 30 mm (D2)



OH! COB working light

N-m 608. COB work light with stand, magnet, carabiner and bottle opener. 500mAh battery, 500 lumens. Material: aluminium, ABS, PC. Weight: 46 g. Dimensions: 72 x 46 x 21 mm. **Advertising option:** on body 35 x 8 mm (L2)



FACTORY - COB LED light

N-m 180. Small, powerful, always at hand! COB LED light, black body with magnet and clip. 3 x AAA batteries included. Dimensions: 165 x Ø24mm. Weight: 78g. Plastic-free individual packaging. **Advertising option:** On the recess of the handle, 20 x 5mm, 1c white or silver (D2).



COB CREE flashlight

N-m 466-1. The bright 300-lumen all-rounder with various light levels, flashing light, SOS, zoom function, wrist strap and interchangeable rings in different colours. Including 3 x AAA batteries. Material: aluminium. Weight: 154 g. Dimensions 150 (180) x Ø 28 (38) mm. **Advertising options:** on the body 15 x 10 mm (L2/D2), 3D engraving, max. 15 x 20 mm (3DL3)





BEAM 1000 lumen torch

N-m 635. 1000 lumen torch with XHP50 LED and side COB light. IP44 splash-proof, 1500mAh battery, zoom function, 4 light modes. Material: aluminium. Weight: 141 g. Dimensions: Ø 41 (28) x 133 (151) mm. **Advertising option:** on shaft, 20 x 50 mm (L2, D2)



COB + SMD work light

N-m 494. Flexibility in your pocket! Work light with swivelling head, 300 lumens (COB) and 20 lumens (SMD), magnet on base, 500mAh battery, can be charged directly via USB-A. Material: Aluminium, ABS. Weight: 76 g. Dimensions: 97 (194) x Ø 26 mm. **Advertising options:** On fold-out work light 40 x 10 mm (D2,L2), On barrel 15 x 5 mm (D2,L2), On barrel 3D engraving, max. 15 mm width (3DL2)





Beanie with Frontlight and Headband

N-m 555. Wool cap with a removable light unit that can also be inserted into the headband. 300mAh battery, can be charged directly via USB-A. Material: acrylic. Weight: 145 g. Dimensions: 59 x 59 x 51 mm. **Advertising options:** On the visor, up to 50 x 30 mm (ST1), up to 100 x 30 mm (ST2), maximum embroidery up to 30% of the area. On the LED unit, 25 x 5 mm (D2)



NIMBUS sensor-switched head torch

N-m 606. Head torch with diffused and focused light and sensor operation. 1200mAh battery, max. 350 lumens, IPX4 splashproof. Material: silicone, ABS. Weight: 71 g. Dimensions 285 x 35 mm. **Advertising options:** on the body 30 x 18 mm (D4, 1c white or silver), 25 x 15 mm (D4, 1c white or silver), including branding before and after, other colours on request.



CLIMATE



Radio-controlled wall clock

N-m 870. Classic radio-controlled wall clock with thermometer and hygrometer. 1 AA battery included. Material: aluminium, ABS, glass. Weight: 376 g. Dimensions: Ø 300 x 40 mm. **Advertising options:** on the metal ring, 50 x 10 mm (L2, D2), digital printing behind glass, approx. 50 x 30 mm (UV4), approx. 90 x 50 mm (UV5), engraving through the glass on the dial, 50 x 30 mm (L4)



BALANCE hygrothermometer

N-m 667. Should I air the room? BALANCE reliably indicates your personal feel-good climate and how you can improve it. Material: ABS, weight: 21 g. Dimensions: 50 x 13 x 34 mm. **Advertising option:** on the front, 35 x 4 mm (D2, UV2)



Wellness

For the relief of tension and pain in the neck area.

Adaptable 360°-movable 3D electrodes.

Effective TENS (transcutaneous electrical nerve stimulation) and heat supply up to 42 °C.

Versatile application with 3 massage modes and 15 varied intensity levels



RELAX neck massager

N-m 636. Feel good, relax, recharge your batteries. RELAX massages your neck in an indescribably pleasant way. 3 massage modes, heated contact surfaces, intuitive control with voice prompt. Material: ABS, stainless steel, silicone. Weight: 154 g. Dimensions: 145 x 150 x 46 mm. **Advertising options:** on the handle, 35 x 20 mm, maximum 2c (D4), on the side, 35 x 20 mm, maximum 2c (D4)



MUSIC



TWINS stereo loudspeaker set

N-m 673. The all-rounder: Powerful 2 x 10 W sound, whether attached with magnet or placed separately on the desk. Material: ABS. Weight: 757 g. Dimensions: Ø 85 x 235 mm. **Advertising option:** On the side or upper round plate, Ø 30 mm (L2)





BOOM! 30 W speaker

N-m 618. Wow, what a sound! 30W speaker with 2 x 2000mAh battery. Material: ABS. Weight: 770 g. Dimensions: Ø 105 x 130 mm.

Advertising option: on the plastic plate Ø 35 mm (L2)



BABY BOOM! 5W speaker

N-m 648. Did someone say, 'Just 5 watts'? So prick up your ears! With AUX input, TF slot and hands-free function. 1200mAh battery for 5 hours of playtime. Material: ABS, aluminium. Weight: 265 g. Dimensions: Ø 70 x 93 mm. **Advertising option:** on the front, 10 x 50 mm (D2, L2)



SIGN wireless speaker

N-m 422. Make a statement! A multi-talented companion for on the go; with wrist strap, hands-free function, AUX, SD card slot and radio function. 5W loudspeaker. Battery 400mAh. Housing material: rABS. Dimensions 118.2 x 39 x 79.3 mm. Weight 189g.

Advertising options: on the side in white or silver, 15 x 30 mm (D2), on the back in white or silver, 40 x 20 mm (D2, UV2)

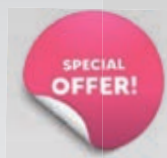




PUNK ANC headphones

N-m 640 schwarz. Great sound without annoying background noise thanks to Active Noise Cancellation (ANC). Wireless music enjoyment, 500mAh battery, 5 hours of playtime (with ANC), AUX input and hands-free calling. Velvet bag included. Material: ABS. Weight: 201 g. Dimensions: 220 x 260 x 94 mm. **Advertising options:** on the bracket, 35 x 20 mm (D3H), on the outside of the receiver, 30 x 40 mm (D3H)





DROP TWS earbuds

N-m 526 black / N-m 527 white. TWS earbuds that fit well in the ear with good sound at the offered price. Rechargeable batteries with 2 x 40 or 300mAh. Material: ABS. Weight: 38 g. Dimensions: 72 x 39 x 31 mm. **Advertising options:** on the lid of the charging box 40 x 15 mm (D2/UV2), on the front of the charging box 30 x 5 mm (D2), on the earpiece Ø 12 mm (D2)



TWS earbuds

N-m 574. Economy TWS earphones with music and telephony function, batteries 2 x 30 or 200mAh, 3 hours of playtime, large advertising area. Material: ABS, silicone. Weight: 37 g. Dimensions: 60 x 25 x 62 mm. **Advertising option:** on the body, 30 x 20 mm (D2, UV2)



CLEAR TWS earbuds

N-m 548. Concert hall atmosphere for your ears! TWS earphones with control sensors, 5 hours of playtime and powerful batteries with 2 x or 420mAh. Material: ABS. Weight: 54 g. Dimensions: 50 x 23 x 60 mm. **Advertising options:** on the back of the charging box, 30 x 30 mm (D2), on the front of the charging box / on the sides, 30 x 10 / 30 x 15 mm (D2), on the back of the charging box, 35 x 40 mm (UV2)





CLUB TWS earbuds

N-m 633. Transparent TWS earbuds with digital charge level indicator, telephony function and excellent sound. Material: ABS, PC. Weight: 35 g. Dimensions: 50 x 42 x 28 mm. Branding: on the back, 17 x 17 mm (D2)



STUDIO ANC TWS earbuds

N-m 624. TWS earbuds with ANC and balanced sound. ENC with 4 microphones for phone calls. Battery 2 x 40 and 400mAh. Material: ABS, stainless steel, silicone. Weight: 51 g. Dimensions: 66 x 27 x 43 mm. **Branding:** on the body, 30 x 15 mm (D2, UV2)





SOUL loudspeaker

N-m 619. Wonderfully simple 5W speaker with crystal-clear sound. 500 mAh battery, TF card slot and IPX5 water resistance. Material: aluminium, ABS, silicone. Weight: 100 g. Dimensions: 58 x 31 x 61 mm.

Branding: on the back, 25 x 35 mm (D2, L2), upright on the side, 10 x 35 mm (D2/L2)



BANG MINI speaker

N-m 482. High-quality loudspeaker with crystal-clear sound. In an attractive gift box, a real premium gift! 3W loudspeaker, 500mAh battery, playing time approx. 6 hours, can be connected via TWS. Material: metal, ABS. Weight: 246g, dimensions: 57 x 57 mm. **Advertising options:** on the side of the body 12 x 12 mm (L2), 3D engraving, max. 46 x 20 mm (3DL4), on the box 50 x 50 mm (D2)



AMBIENT charging, light, sound!

N-m 617. Perfection for your bedside table: 5W speaker with 15W wireless charger and detachable RGB night light. Battery capacity 600mAh. Material: ABS, PC. Weight: 379 g. Dimensions: Ø 180 x 80 mm.

Advertising option: on the body, 40 x 15 mm (D2,UV2)



TOOLS



DIY1 screwdriver set

N-m 643. Do it yourself! Push container with handy ratchet screwdriver and eight bits made of chrome-vanadium steel, hardness 50-54 Rockwell: hexagon H4 and H5, Torx T20H and T25H, cross-head PH1 and PH2, slot SL3.0 and SL6.0. Hexagon socket adapter for 4 mm fine tool bits and adapter for 1/4" square to hexagon. Material: aluminium, ABS, steel. Weight: 241 g. Dimensions: 36.5 x 36.5 x 158 mm. **Advertising options:** on the aluminium casing, 20 x 50 mm (D2, L2, UV2), on the aluminium casing, 20 x 70 mm (D3, L3, UV3), 20 x 100 mm (L4)



DIY2 24-piece precision tool set

N-m 644. Precision tool bit set with precision screwdriver holder and 24 bits. Material: PP, carbon steel alloy, aluminium. Weight: 241 g. Dimensions: 70 x 158 x 17 mm. Advertising: on the outer sleeve, 30 x 50 mm (D2), 40 x 70 mm (D3)



SNACK lunchbox with spork

N-m 645. Leak-proof 1300 ml lunch box with inner compartments and a compartment for a spork. Material: PP, PC. Weight: 177 g. Dimensions: 190 x 140 x 80 mm. **Advertising options:** on the front, 50 x 30 mm (D2), on the long side, 50 x 30 mm (D2), on the lid, 50 x 30 mm (D2), on the spoon compartment, 15 x 50 mm (D2)



DUO double lunch box

N-m 611. Good industrial design instead of a throwaway cover! Lunch box with leak-proof lid, microwaveable and dishwasher-safe. Material: PP, PS, silicone. Weight: 381 g. Dimensions: 140 x 140 x 115 mm. **Advertising option:** on the side of the body or on the lid 50 x 20 mm (D2)



The product shown may differ slightly from the original in shape and color.

lunch boxes



PAUSE! cereal cup

N-m 655. Muesli to go – your perfect companion for an energetic start to the day. Three containers with volumes of 560, 230 and 35 ml, plus spoons. Material: PP, PC, silicone. Weight: 144 g. Dimensions: Ø 99 x 157 mm. **Advertising option:** on the body, 20 x 40 mm (D2)





Lunch box made of PLA

N-m 564. One to fall in love with and never give away! 1200 ml lunch box made of industrially compostable PLA. Material: PLA, bamboo. Weight: 206 g. Dimensions: 200 x 80 x 120 mm. **Advertising options:** on the lid, 50 x 30 mm (L4), 70 x 50 mm (L5), on the side, 60 x 30 mm (D2)

Double lunch box

N-m 561. All the features of a bestseller combined in a simple box: 2 x 500 ml content, cutlery, breakfast board! Material: PP, bamboo. Weight: 408 g. Dimensions: 180 x 105 x 92 mm. **Branding:** on the side, 50 x 30 mm (D2, UV3) on the lid, up to 50 x 30 mm (L4), up to 70 x 50 mm (L5)



Lunch box with phone stand

N-m 562. 1000 ml microwave-safe lunch box with strap and clip that also serves as a phone stand. Material: PP. Weight: 200 g. Dimensions: 190 x 118 x 63 mm. **Advertising options:** on the lid, 50 x 45 mm (D2), 37 x 69 mm (UV3), on the long side, 50 x 30 mm (D2, UV3), on the short side, 40 x 30 mm (D2)



VAC stainless steel container

N-m 592. Leak-proof and tight with a press of the thumb! 1000 ml container with flexible lid. Material: stainless steel, PP, silicone. Weight: 237 g. Dimensions: 189 x 116 x 78 mm. **Advertising options:** on the lid, 40 x 30 mm (D2), on the side of the body, 40 x 30 mm (D3, L2)



WAVE stainless steel box

N-m 615. Microwaveable stainless steel box with real glass lid and 1250ml volume. Material: stainless steel, PP, glass. Weight: 371 g. Dimensions: 212 x 165 x 79 mm. **Advertising options:** on the body, 40 x 30 mm (D3, L2), on the lid, 40 x 30 mm (D3)



Stainless steel lunch box 1200 ml

N-m 604. For purists and true environmentalists! 1,200 ml capacity, leak-proof and dishwasher-safe. Material: stainless steel. Weight: 314 g. Dimensions: 195 x 146 x 65 mm. **Advertising options:** On the lid, 40 x 20 mm (D2H, L2), 60 x 40 mm (D3H, L3), on the side of the body, 40 x 20 mm (D2H, L2), 60 x 20 mm (D3H, L3)





① STEEL lunch boxes

N-m 584 (1350 ml) / N-m 585 (1000 ml). Indestructible lunch boxes made of hygienic, dishwasher-safe stainless steel. Material: stainless steel, bamboo. Weight: 354 or 274 g. Dimensions: 183 (167) x 143 (128) x 67 (62) mm. **Advertising options:** on the lid, 50 x 30 mm (L4), 70 x 50 mm (L5), on the body, 30 x 30 mm (L3)



② GLASS lunch boxes

N-m 586 (640 ml) / N-m 587 (1050 ml). Excellent storage box for food. Suitable for refrigerators and microwaves. Material: borosilicate glass, bamboo. Weight: 573 or 833 g. Dimensions: 173 (200) x 127 (150) x 59 (69) mm. **Advertising options:** on the lid, 50 x 30 mm (L4), 70 x 50 mm (L5), on the body, 30 x 30 mm (D4)



Lighters



SWING arc lighter

N-m 533. A handy arc lighter for almost any application, with a mechanism to prevent unintentional ignition and a 220mAh battery. Material: ABS, zinc alloy. Weight: 68 g. Dimensions: 117 (230) x 37 x 16 mm.
Advertising option: On the body, 50 x 10 mm (D2, L2)

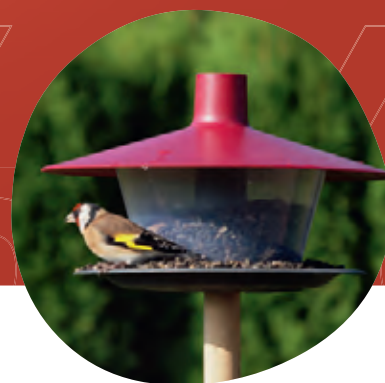


ARC electric lighter

N-m 499. Stylish arc lighter with metal surface, charge level indicator and safety mechanism to prevent unintentional ignition. Rechargeable 220mAh battery. Material: aluminium, ABS. Weight: 108 g. Dimensions 225 x 36 x 22 mm. **Branding:** on body above slider 50 x 10 mm (D2/L2), on body below button 30 x 20 mm (D2/L2)



SALE



- 1 **RFID protects your cards.** N-m 426 grey metallic.
- 2 **RFID leather case with banknote clip.** N-m 427 black.
- 3 **RFID leather case.** N-m 429 black.
- 4 **Vacuum bottle 500ml.** N-m 384-1 matt gray.

- 5 **BIRDIE bird table.** N-m 607-1 anthracite.
- 6 **BIRDIE bird table.** N-m 607-2 N-m 607-2 green.
- 7 **BIRDIE bird table.** N-m 607-3 red.

⑧



⑨



⑩



⑪



⑫



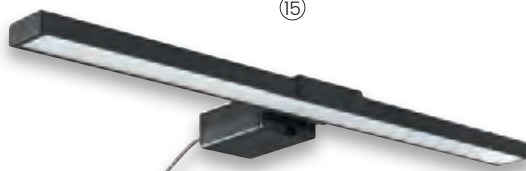
⑬



⑭



⑮



- 8 **Speaker with SD slot and FM radio.** N-m 245.
- 9 **Flexible USB light.** N-m 323.
- 10 **Stainless Steel Car Charger.** N-m 330-1
- 11 **USB power supply with LED light.** N-m 338.

- 12 **Car charger with quick-charge function:** N-m 436.
- 13 **Wireless Charger.** N-m 544.
- 14 **Solar-powered desk calculator.** N-m 600-2.
- 15 **Dimmable monitor light.** N-m 579 black.

EXCERPT FROM OUR FINISHING OPTIONS



Laser engraving

Laser engraving with CO2 laser machines from Trotec. We use the fastest laser engraving machines on the market to significantly reduce delivery times, significantly.



3D engraving

Our Blue Line fibre lasers facilitate 3D engraving of large-area motifs on round bodies. We can therefore engrave workpieces with complex shapes on various levels, as well as bevels and curved contours for you without any significant distortions.



Digital rotary printing

The latest generation of digital LED UV rotary printing facilitates large-format printing on bottles and glasses, as well as full-circumference rotary printing.



Embossing

Deep and relief embossing produces fantastic results on leather, soft plastics and cardboard covers. Embossing can be performed blind or with a background colour. The option to emboss individual names using font suitcases is a special feature. This makes products unique and individual.



Digital printing

Digital technology is increasingly being used for printing small volumes and for motifs with colour gradients. The higher per unit printing costs are largely compensated by the lower preprinting costs here.



Pad printing

Pad printing is so precise that even the smallest fonts and contours can be produced with an excellent finish. We implement up to 6-colour solid colour motifs for you. A large number of basic colours is available, so we can mix any colour value based on RAL, HKS or Pantone specifications.

LEGEND



2-in-1 connection



USB chargeable



Quickcharge



MFI – Made for iPhone/iPod/iPad



Temperature reading



Spray water protected



3-in-1 connection



AUX



Microphone



Stereo capable



Time



Dishwasher proof



4-in-1 connection



USB-C



Radio



LED



Alarm



Real leather



USB 2.0



SD, micro SD, or MMC slot



360° Rotation



Radio



Leak-proof



Lamb leather



Micro-USB



Smart Charge Technologie



Magnetic



Microwaveable



Recycling